



Donaldson  
FILTRATION SOLUTIONS

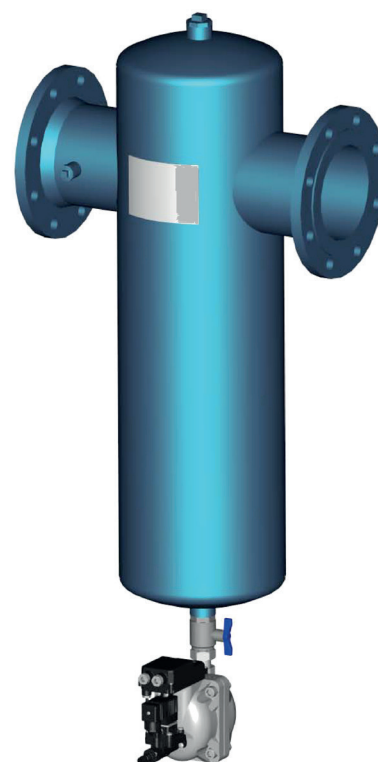
# Compressed Air Filtration

## Cyclone separator Ultradri

SG-Z

### MAIN FEATURES & BENEFITS:

- High retention rate, low pressure loss
- Intelligent overall concept meet requirements of industrial air purification
- Flow-optimised design, minimum pressure loss for economic compressed air purification (saving of energy costs)



Version  
Superplus

### INDUSTRIES



- Chemical and pharmaceutical industry



- PCB assembly and CD manufacturing



- Surface finishing



- Machine building industry and plant engineering / construction



- Energy and power generation

Donaldson Filtration Deutschland GmbH  
Büssingstr. 1  
D-42781 Haan  
Tel.: +49 (0) 2129 569 0  
Fax: +49 (0) 2129 569 100  
E-Mail: CAP-de@donaldson.com  
Web: [www.donaldson.com](http://www.donaldson.com)

Donaldson®  
Ultrafilter

## PRODUCT DESCRIPTION

---

The SG-Z cyclone separator was designed for the purification of air and other gases in an industrial range of applications. The housings with construction swirl vane offer, low differential pressures at high flow rates. The SG-Z is available in a super-plus version, where it will be supplied with an electronically controlled zero-loss drain.

Between drain and housing a ball valve is installed.

In this product series 6 different housings are available ranging from a volume flow of 1650 to 15000 m<sup>3</sup>/h (related to 7 bar (g)).

---

The swirl vane starts the compressed air rotating. Caused by the centrifugal force the aerosols and particles are retained on the wall of the filter bowl.

To prevent aerosols from being carried over from the collecting point, an extra battle plate is installed.

---

The SG-Z cyclone separator conforms to the requirements of the European directive 2014/29/EU for pressure vessels.



**Version  
Standard**

**The SG-Z cyclone separator is designed and developed for the following applications:**

- **Central compressed air processing:**
  - Removal of liquids and aerosols downstream aftercoolers
  - Pre-purification stage upstream high efficiency filters

## PRODUCT SPECIFICATIONS

Features	Benefits
Optimized housing construction for best flow velocity	Savings in purification costs due to low pressure loss
Superplus-Version: Condensate drain UFM-D	Condensate drainage without compressed air loss

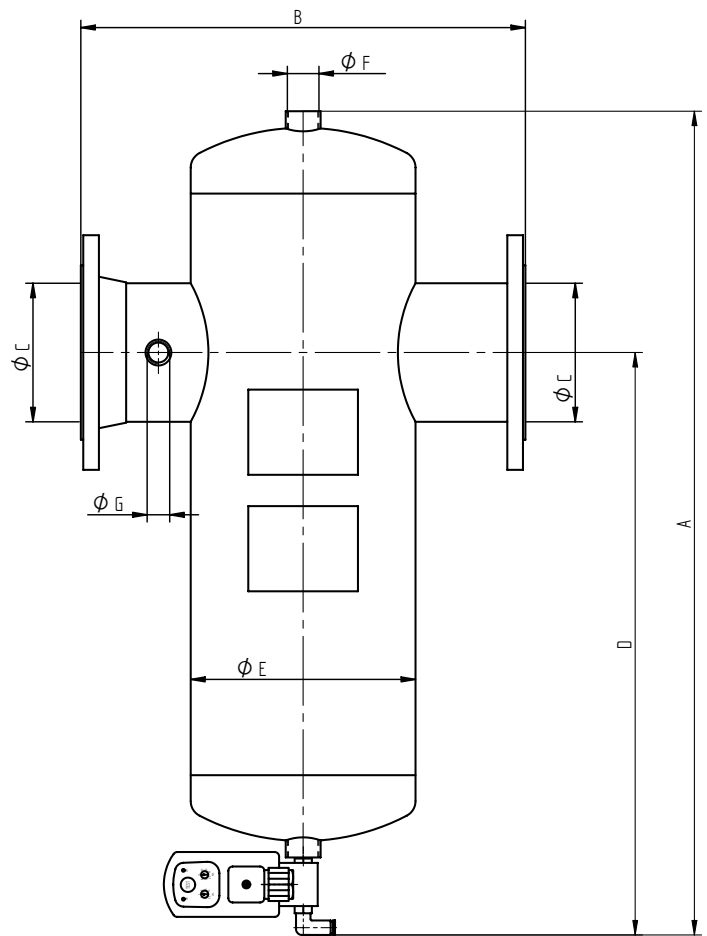
Technical Data	
<b>Max. operating pressure:</b>	1650-7500: 16 bar
	10500-15000: 10 bar
<b>Test pressure:</b>	1650-7500: 24 bar
	10500-15000: 15 bar
<b>Perm. operating temperature</b>	+1°C / +65°C
<b>Material:</b>	St
<b>Pain coat</b>	Polyester resin coated

## MATERIALS/ DIMENSIONS

## SG-Z STANDARD 1650-15000

Drain Type	
1650-15000	UFZ

Materialien:	
Filter housing	Steel, design approved
UFZ	Brass



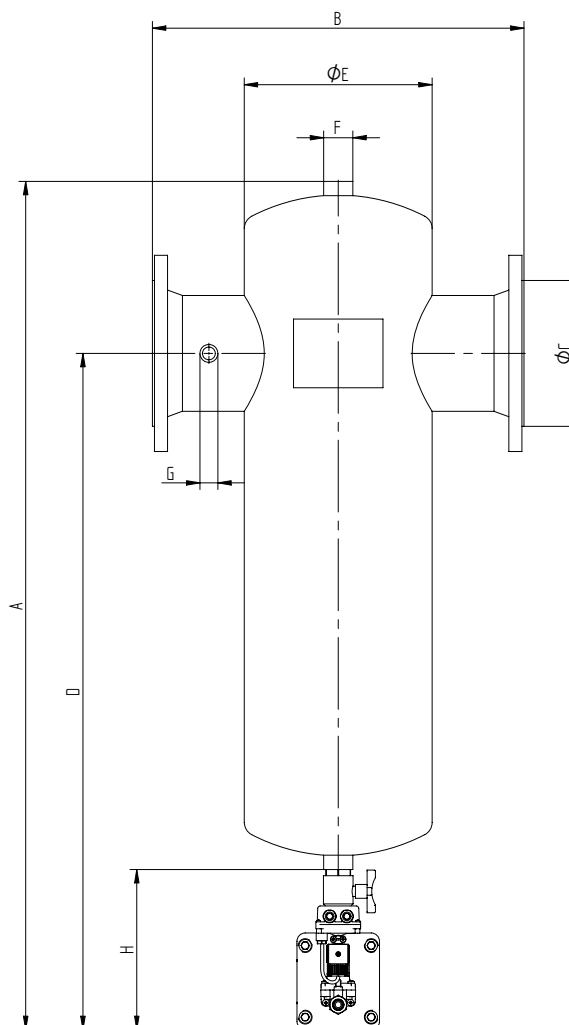
Housing size	Volume (l)	Weight (kg)	A mm	B mm	C	D mm	E mm	F mm	G
1650	12,5	24	750	380	DN 80	570	168,3	G 1	G 1/2
2750	28	48	900	440	DN 125	690	219,1	G 1	G 1/2
5000	52	70	1065	540	DN 150	815	273,0	G 1	G 1/2
7500	111	104	1305	650	DN 200	990	355,6	G 2	G 1/2
10500	280	174	1665	800	DN 250	1285	480,0	G 2 1/2	G 1/2
15000	438	255	1995	900	DN 300	1485	560,0	DN 100	G 1/2

MATERIALS/ DIMENSIONS

SG-Z SUPERPLUS 1650- 15000

Drain Type	
1650-15000	UFM-D30/ 130

Materials:	
Filter housing	Steel, design approved
UFM-D	Aluminium, KTL coated



Housing size	Volume (l)	Weight (kg)	A mm	B mm	C	D mm	E mm	F mm	G	H
1650	12,5	24	860	380	DN 80	680	168,3	G 1	G 1/2	240
2750	28	48	1010	440	DN 125	800	219,1	G 1	G 1/2	240
5000	52	70	1235	540	DN 150	985	273,0	G 1	G 1/2	240
7500	111	104	1485	650	DN 200	1170	355,6	G 2	G 1/2	245
10500	280	174	1845	800	DN 250	1465	480,0	G 2 1/2	G 1/2	245
15000	438	255	2175	900	DN 300	1665	560,0	DN 100	G 1/2	245